



VINCI UK
FOUNDATION

Annual Report

2020

CONTENTS

Introduction	p.3
Evolution	p.4
Figures	p.5
Project	p.6-p.7
2020 Charities supported	p.8-p.73
Get involved !	p.74
People	p.75-p.76



Fighting social exclusion together

The VINCI UK Foundation funded by eight UK Subsidiaries and set up in 2016 has been a huge success. Our main aim, to fight social exclusion, is at the heart of the Foundation and we do this by creating lasting relationships between charities and employees (VINCI sponsors) who donate time and professional skills. With a total of 130 projects supported so far; 33 in 2020, VINCI has taken this opportunity to give back to the communities where we live and work, targeting areas such as 'Promoting access to employment', 'Integration through housing', 'Inclusive mobility'

and 'Building better communities in underprivileged neighbourhoods', VINCI has the opportunity to have a really positive influence on local communities. It has been a privilege to see the tangible benefit that the Foundation provides to so many deserving organisations and the enjoyment on the faces of our own employees noticeably proud of the benefits that they have been able to bring to the different organisations.

We are looking forward to further developing the work of the Foundation in 2021 and our thanks goes to all those who supported us in 2020 and have made the work of the VINCI Foundation so successful.



Phil Horton
Chairman of the VINCI UK Foundation



Ruth Otley
Head Coordinator of the VINCI UK Foundation

2019

Applications **55**Projects **29**Funding granted **200k**Sponsors **30**

206,500

Funds (contributed in 2020)

202,000

Project grants*

2020

Applications **43**Projects **33**Funding granted **202k**Sponsors **39**

Budget 2020

Covid-19 funding

In 2020 VINCI announced an extraordinary €10M of funds made available to help charities in the fight against COVID-19. **£345,118** of this was used to support **95 charities** in the UK.

How we have grown

- The Selection Committee, with **Philip Horton** as representative of the Board of Directors, selected **33 projects** out of 43 applications.
- Each project has **between 1 and 2 VINCI sponsors** associated.
- The Local Co-ordinators, the Sponsors and the charities have been informed of whether they had been selected or not.
- The 33 successful projects are to **receive between £3,000 and £20,000** each.
- The **Partnership Agreements** of the successful projects have then been sent out and have all been signed.

Our Successful Projects

Local engagement – Sponsorship – Responsibility



Taking action against all forms of social exclusion

The Foundation supports projects that provide lasting solutions to social or employment integration difficulties experienced by some of the underprivileged in the community.

Encouraging initiatives

The Foundation encourages initiatives located as close as possible to the regions where VINCI is present. In order to adapt to local circumstances and encourage the social commitment of Group employees, the Foundation has created a European network. Today, there are 12 Foundations making a lasting commitment to fighting exclusion.

Support dual aid for project sponsors

The Foundation systematically provides support in two forms to the projects in which it participates: financial aid for investments and the skills of one or more Group employees.

Evaluating our impact

All the projects that receive the Foundation's support are monitored and assessed. The project managers and their VINCI sponsors conduct an annual review of their actions together. The Foundation sets objectives for each project to enable the measurement of its impact, especially in deprived neighbourhoods.



Helping children and adults with a range of disabilities get a sense of independence

Riding course for those with disabilities

South Bucks Riding for the Disabled Association is a charity created in 1965, based in the town of Spoke Poges. The charity promotes the aims of the Riding school by providing people with the opportunity to ride to benefit their health and well-being.

Riding is widely recognised as an excellent form of therapy – building self-confidence, improving concentration and, at the same time, providing recreation, education and sport. The centre is open 7 days a week, the staff look after 12 horses and ponies that provide approximately 100 riding opportunities per week which are delivered by 60 volunteer instructors and helpers.

Kitchen refurbishment

With the help of the VINCI UK Foundation, the charity was able to update their kitchen facilities in the stable yard to provide safe and hygienic location for the volunteers and staff.

They created a hub for snacks, drinks, lunch as well as a seating area for informal meetings and briefings. It also provided a social area where they can check in with each other and ensure everyone is well and happy.



Sponsor

Dafydd Belshaw
Bachy Soletanche

Charity

South Bucks Riding for the Disabled

Contact

01753 662796
julie.thomson@southbucksrda.org
www.southbucksrda.org

Amount of funding

£7,421

Project

Refurbishment of volunteer and staff kitchen

Involvement of the sponsor

Provide general support and guidance with the project.



At the service of youth

A unique service

YMCA Port Talbot is a charity based in Wales created in 1898. The charity commitment is to help the local community thrive. They have been running a homeless hostel/accommodation since 1989 which provides a long-term base for young homeless between 18 to 35 while they get their lives back on track and find permanent accommodation.

Homeless young men tend to be at the hostel between 6 months and two years. They also run youth groups and rent out office space and have a membership of over 600 people in the local community.

Modern facilities

With the help of the VINCI UK Foundation, the charity was able to have a bathroom refurbishment. The update of the bathroom was necessary as they have not been updated since the 1980s. Modern facilities would be more efficient. This renovation creates long term savings for the charity and a better environment.



Sponsor

Wendy Davies
Bachy Soletanche

Charity

YMCA Port Talbot

Contact

01639 887034
funding@ymcaporttalbot.wales
www.ymcaporttalbot.wales

Amount of funding

£5,000

Project

Bathroom Refurbishment

Involvement of the sponsor

Help the charity with their contact in the housing industry.





Improve mobility

Promoting Independence

Blind And Sight Impaired Society also known as (BASIS) is a charity who support the visually impaired in South Essex. They also cover Basildon, Billericay, Wickford, Brentwood, Castlepoint and Thurrock, most beneficiaries are over 65 and socially isolated. Many activities are proposed by the charity including teaching braille, home visiting in order to offer information, guidance and emotional support, eye clinic liaison services at the local eye hospital, accompanying people on their appointment.

and expanding further

With the help of VINCI UK Foundation, the charity were able to acquire a vehicle that can be used as a mobile sight centre to enable them to demonstrate equipment and provide support to those that cannot leave their own homes. The vehicle has built in storage for low visual aids such as lighting, information leaflets and other materials that provide information to visually impaired people in the community. Also they can reach those living in more rural areas with no access to public transport or family to transport them to the centre.



Sponsor

Madeleine Bishop
Eurovia UK

Charity

Blind And Sight Impaired Society

Contact

01268 522817
michelle@basissouthessex.org.uk
www.basissouthessex.org.uk

Amount of funding

£10,000

Project

Outreach Vehicle for the Visually Impaired

Involvement of the sponsor

Liaise with the charity to identify volunteering and other opportunities.



A place to learn

Living and working together

Community of Grace is a charity based in Leicester who empowers homeless and socially isolated people to transform their lives. They provide supportive activities and accommodation to encourage people who have been homeless or socially isolated to develop their physical and mental and emotional capacities.

The activities proposed by the charity are gardening and cooking sessions and advocacy support.

Providing a work space

With the help of the VINCI UK Foundation, the charity were able to purchase a large potting shed, shade for teaching area, fruit cage, bee workshop, benches and outdoor eating area.

This project brings the community together twice a week for "growing together" gardening sessions, open to all, in the charity community garden. This allows the beneficiaries to gain new skills in informal and pleasant surroundings.



Sponsor

Joanne Plews
Eurovia UK

Charity

The community of Grace

Contact

07971 218710
ben@communityofgrace.co.uk
www.communityofgrace.co.uk

Amount of funding

£4,925

Project

Grace Works Community Garden

Involvement of the sponsor

Support the charity through volunteering and provide recycled materials for use by the organisation.



Building well being

Create initiatives for the community

Exeter Community Initiatives known also as ECI has existed as a charity for over 25 years. ECI was first founded 1991 at Palace Gate Project, they created over 25 new community projects many of them became independent charities.

Exeter Community Initiatives support vulnerable adults to improve skills, confidence and social connections. The charity also provide projects for children and families for support around emotional and practical issues and help parents to access volunteering, training and employment.

Giving objects a second life

With the help of the VINCI UK Foundation, the charity made the project ReMade which is an upcycling shop with a difference. ECI provide training and support to people who are in unemployment or recovering from mental health issues and addictions.

These trainees use ReMade workshop to refurbish and upcycle pieces of furniture, creating useful products from waste of recycling. ReMade training permits to develop skills in woodwork, carpentry, sewing and design.



Sponsor

Kirsty Donkersley
Eurovia UK

Charity
Exeter Community Initiatives

Contact
01392 205800
kevin.hunter@eci.org.uk
www.eci.org.uk

Amount of funding
£4,974

Project
ReMade

Involvement of the sponsor
Help to promote the charity and provide assistance with fundraising, general support.



At the service of the community

Community support

Horsham Matters is a charity who support the most vulnerable residents facing crisis across the Horsham District. They provide a range of impactful services including district foodbanks, winter night shelter, community meals, fuel vouchers to support those experiencing fuel poverty as well as supply of furniture and essential household items to those newly housed.

The charity covered a large geographical area of 205 square miles predominantly rural in character.

Accessibility improvement

With the help of the VINCI UK Foundation, the charity were able to buy a community car, which plays a pivotal role in all their charitable activities, improving accessibility across all their projects. Specifically, for those people in wheelchairs who currently remain at home and unable to access their foodbanks and community meals.

The overall goal is to facilitate access to impactful services which address the direct needs of vulnerable residents of the Horsham District area, particularly those who are housebound.



Sponsor

Kate Meadows
Eurovia UK

Charity

Horsham Matters

Contact

03001 240204
emma.elnaugh@horsham-matters.org.uk
www.horsham-matters.com

Amount of funding

£10,000

Project

Community Car

Involvement of the sponsor

Provide support for fundraising events, and using her expertise and knowledge, support the delivery of charitable activities.



Learning and Growing

An opportunity for people with specific needs

Leapgate Activity Centre is a charity based on a working farm with onsite café and workshop. They provide activities for people with additional needs, primarily learning difficulties in a safe and secure environment.

Participants are able to care for farm animals, do maintenance and horticultural work, woodwork, arts and all the tasks involved with running a café.

Attendees are located throughout Worcestershire and Wyre Forest, they have learning difficulties such as Down's Syndrome or Autism. The regular attendees are post education age with no upper limit age.

In a renovated outdoor place

With the help of the VINCI UK Foundation, the charity installed a picnic space and made a landscape with trees. A fencing of 102 meters was installed to secure the perimeter. The project encourages physical exercise and promotes the health and well being of people with additional needs in a safe and fun space.



Sponsor
Geoff Pool
Eurovia UK



Sponsor
Richard Fryer
Eurovia UK



- **Charity**
Leapgate Activity Centre
- **Contact**
07971 442646
michhandley@yahoo.co.uk
www.leapgateactivitycentre.co.uk
- **Amount of funding**
£3,810
- **Project**
Activity center / Outdoor area
Gym
- **Involvement of the sponsor**
Promote and support the activity centre and open up opportunities to other.



Fresh food for the community

Supporting the community

Moat House Community is an organisation localised in Coventry. They provide activities & events, information & advice, training, volunteering opportunities, friendship & support for residents. The organisation has established income generating social enterprises including community centre,

community café, growing property portfolio comprising a commercial unit and 8 family homes for affordable rental. These social enterprises fund all overheads and multi-generational community activities with some capacity to develop new demand led services.

Weekly food distribution

With the help of the VINCI UK Foundation, Moat House Community will be able to pilot the "Grub Hub" project by providing the funding for fridges and freezers.

The "Grub Hub" project responds to the communities needs. This project provides affordable and accessible fresh food.

This action fights the rising price and food poverty which affects the most vulnerable including young families, elderly and health compromised. The charity access surplus food from end of a day store collections at low cost.



Sponsor

Stuart Townsend
Eurovia UK

Charity

Moat House Community

Contact

07935 576530
dianne@mhct.co.uk

Amount of funding

£3,000

Project

Grub Hub & Holiday Club

Involvement of the sponsor

Help them with their project as a volunteer.



Delivering a high standard of supported accomadation for vulnerable families

Offering new opportunities for vulnerable famillies

Parents and Child Together North East also known as PCTNE is a charity which provides housing for vulnerable families. They aim to promote and preserve good health among parents and children.

The charity provide comfortable homes in a beautiful semi-rural area location. The beneficiaries are families experiencing overcrowding, homelessness, poverty, mental and physical health issues, disabilities, domestic violence and other crisis.

Geographically, the charity support families from Hartlepool, Redcar, Cleveland, Middlesbrough, Stockton, Darling and North Yorkshire.

Creation of multifunctional space

With the help of the VINCI UK Foundation, the charity finished the final phase of a project to build a family center at Eagle House. The support enabled the charity to finance the purchase of decorating and flooring materials.

The family center composed a communal kitchen, accessible bathroom and multi-functional meeting room. The objective of this project is provide a cross-functional meeting space for residents, staff and wider local community.



Sponsor

Peter Thompson
Eurovia UK

Charity

Parent and Child Together North East

Contact

07535 977188
pactne@gmail.com
www.pactne.co.uk

Amount of funding

£3,000

Project

Building a Family Centre

Involvement of the sponsor

Involved in the practical aspects of completing works for the project.



Safe and warm environment

Giving everybody the comfort they deserve

Sanctus is a charity based in the city of Chelmsford, who provide a shelter from the cold with the aim of preventing loneliness for a vulnerable group within the community.

Sanctus provide a space to eat and to be around others. They provide daily hot meals, hot and cold drinks, food and clothes and a wide range of training and supporting services.

They support predominantly, the homeless, elderly, pre-pension and PTSD sufferers who cannot afford heating and food. Sanctus support between 200 to 240 people, male and female across the age range. While 2019 year they provided over 18,300 free meals and over 1,100 free counselling and mentoring sessions.

In a favourable place

With the help of the VINCI UK Foundation, the charity refurbished parts of their building and were able to provide increased facilities to make secure, fit for purpose. Sanctus's aim is to provide the necessary equipment and services to enable the Sanctus team's to carry out their roles in a suitable environment.

The refurbishment improved the kitchen space by changing windows, front door, adjoining window and rear door. They also acquired a new boiler and radiators with the aim to heat the whole building.



Sponsor

Odette Veness
Eurovia UK

■ **Charity**
Sanctus

■ **Contact**
01245 257985
info@sanctus-home.com
www.sanctus-home.com

■ **Amount of funding**
£6,189

■ **Project**
Enhance, Sustain & Grow

■ **Involvement of the sponsor**
Promote volunteer opportunities to Eurovia employees interested in supporting the refurbishment and help to raise awareness of the Sanctus work.

SAHWR

Help is out there

A place to recover

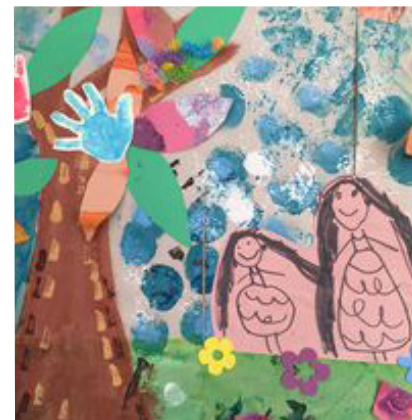
SAHWR previously known as St Albans & Hertsmere Women's Refuge is a charity and an independent domestic abuse service with over 37 years of experience. Domestic abuse has a devastating impact and affects a person's physical and mental wellbeing and erodes their hope for the future.

The work of the charity is to help rebuild lives, safeguard from further abuse and avoid repeat victimisation. They deliver excellent services to adults and children affected by domestic abuse in the St Albans city and district and Hertsmere areas.



Improve user experience

With the help of the VINCI UK Foundation, SAHWR is able to upgrade their computers and move into the cloud. By purchasing refurbished computers, complete with a new operating system and a warranty. This change will improve user experience by moving fully into the Cloud and removing the domain-based security system.



Sponsor

Rea Evans
Eurovia UK

Charity
SAHWR

Contact
01727 826431
info@sahwr.org.uk
www.sahwr.org.uk

Amount of funding
£5,000

Project
IT Upgrade

Involvement of the sponsors
Provide assistance with maintenance and up-keep around the refuge. Participation of a volunteering day.



Building Skills, Maximising Potential

Fighting the difficulties

Step by Step School is a small independent day school for pupils with autism. They provide individual teaching for primary, secondary and sixth form pupils. The beneficiaries are aged between 4 to 19 years old. Step by Step has grown progressively since its creation in 2004, they now take care of 31 pupils.

They provide help to pupils with profound and multiple learning difficulties as well as severe learning troubles. The Step By Step School team members are composed of 65 people who work as headteacher, qualified teachers, certified behavioral analysts, and therapists.

Create interaction

With the help of the VINCI UK Foundation, Step by Step School created a sixth form common room which includes an area where older pupils and staff can interact. This action help to develop pupil's social skills, self-confidence, health and well-being.

The objectives of this project are multiple : preserving the school for actual and future pupils, having more facilities for older pupils, gaining more space for pupils to achieve their full potential.



Sponsor

Stacey Granby
Eurovia UK

- **Charity**
Step By Step School
- **Contact**
gadam@stepbystepschool.org.uk
www.stepbystepschool.org.uk
- **Amount of funding**
£5,000
- **Project**
A Sixth Form Common Room and a Teaching Area for Food Preparation for Pupils With Autism
- **Involvement of the sponsor**
Support the project with her management skills and expertise.



Helping people in difficult situations by different ways

Welcoming all age group

Willenhall Community Forum is a community centre based within the heart of one of the most deprived areas of Coventry. They have a foodbank running from their centre each week for local people who need it. They offer light exercise groups for elderly or people who have mobility concerns. This kind of help reduces the risk of isolation, mental health as well as physical health. The charity run a community café so people can call in meet up and have a chat, as well as job seeker support.

Beneficiaries of the charity are people aged 8 to 80, they from a multitude of cultures, faiths and backgrounds.

Create a better atmosphere

With the help of the VINCI UK Foundation, the community centre will get a much needed refurbishment, by replacing the flooring which was ripped and stained. This refurbishment allows to reduce time and money spent on repairs. The time and money saved can now be reallocated to others activities for the community.

Secondly, the refurbishment creates a better atmosphere and makes it more welcoming who local people who come in and get involved.



Sponsor

Stuart Townsend
Eurovia UK

Charity

Willenhall Community Forum

Contact

02476 511228
enquiries@weetc.org.uk
www.willenhallcommunityforum.com

Amount of funding

£4,930

Project

Hagard Refurb

Involvement of the sponsor

Help the charity with advisory during the refurbishment.



Awareness Research Care

Supporting children and families

The A-T Society is a small charity supporting children and their families whose lives have been shattered by a diagnosis of Ataxia-Telangiectasia (A-T), a complex, degenerative condition for which there is no cure or treatment.

They work closely with service users to understand their needs and with specialists in the field.

They are the only charity in the UK providing specialist practical, emotional and therapeutic support which they do through a range of activities.

Activities provided by the charity are regular outreach, workshops, respite, counselling, specialist medical interventions and they tirelessly advocate to ensure that accessible educational, housing, healthcare and benefits needs are available.

Beneficiaries are 200 children and young adults who are affected by this disabling, life shortening, genetic condition.

Another van to extend

With the help of the VINCI UK Foundation, the charity is enabled to develop their work with young adults living with A-T, by creating a number of videos and leaflets explaining what to expect when visiting the clinic. They offer a range of interventions including a comprehensive programme of bespoke therapeutic support (clinical and non-clinical) to help deal with the emotional aspects of living with A-T.

The key objectives of the project is to expand the charity work to improve the quality of life of young adults living with A-T and to help them to live their lives with independence, choice and dignity.



Sponsor

Mick Balmforth
Freyssinet

■ **Charity**
AT - Society

■ **Contact**
01582 760733
susie@atsociety.org.uk
www.atsociety.org.uk

■ **Amount of funding**
£10,000

■ **Project**
Learning and Living Well with
A-T (Ataxia - Telangiectasia)

■ **Involvement of the sponsor**
Support charity according to
their needs.



Being there for people in difficulty

Attentive to the needs of others

Aspire Oxfordshire Community Enterprise Ltd is a charity based in Oxford and created in 2001. They provide support to people facing multiple challenges to find employment and housing. The charity work with people who have a background of homelessness, offending histories, addiction or mental health difficulties.

They provide support that is focused on needs of each individual, helping them to move forward with their lives. In 2019, they supported over 2,000 people in Oxfordshire and Buckinghamshire.

Stay active

With the help of the VINCI UK Foundation, the charity converted a regular bus to a gym bus complete with gym equipment offering boxercise, yoga and kettle bells sessions to people who need them most.

This project helped people facing multiple disadvantage move closer to employment, training, education and housing through sports and physical activity. Getting active is a crucial first step to help vulnerable people build their confidence and self-esteem, many beneficiaries of the charity face barriers to accessing sport. The project supports 150 vulnerable people across Oxfordshire.



Sponsor

Victoria Robinson
Nuvia

Charity

Aspire Oxfordshire Community
Enterprise Ltd

Contact

01865 204450
nikki@aspireoxford.co.uk
www.aspireoxfordshire.org

Amount of funding

£6,800

Project

Access to employment through
sport: Aspire's Gym Bus

Involvement of the sponsor

The sponsor helps the charity
with her environmental expertise.



Breaking down barriers

Promoting Health & Fitness

ICAN HEALTH & FITNESS CIC is a social enterprise based in Carlisle and created in 2017. They supported individuals with inspirations to be healthier and more emotionally resilient.

They are committed to make a difference by empowering some of the most inactive and hard to reach individuals within Cumbrian communities, breaking down barriers and changing attitudes from I can't to iCan!

iCan runs a fitness facility in Cumbria supporting 160 people per week to improve their exercise and health levels.

A space with social and sporting virtual

With the help of the VINCI UK Foundation, iCan will renovate the new space they have acquired.

This project contributes to reduce social isolation through community member-led programmes uniquely developed by iCan, improve physical and mental wellbeing for marginalised and priority communities.

It also aims to encourage people to take responsibility for their own health in-line with social prescribing and the NHS long term plan.



Sponsor

Chris Medlock
Nuvia

Charity

ICAN Health & Fitness CIC

Contact

01228 819101
julia@icanfitnesscumbria.co.uk
www.icanfitnesscumbria.co.uk

Amount of funding

£10,000

Project

iCan Health and Fitness -
WeCan

Involvement of the sponsor

Chris has been associated with the charity for some time. He has provided support around developing and implementing various marketing initiatives and events to raise the profile of the new 'WeCan Wellbeing hub'.

Support Educate Empower



A partnership with children with specific needs

Centre for ADHD & Autism Support is a charity based in Eastcote. Their mission is to support, educate and empower individuals with diagnosis of ADHD (Attention Deficit Hyperactivity Disorder) or Autism, their families and the community.

Centre for ADHD & Autism Support runs a total of 37 services to support those diagnosed with ADHD or autism, which include support for parents/carer, support for young people, support for adults and support for professionals.

Ice breaker

With the help of the VINCI UK Foundation, Centre for ADHD & Autism Support can improve their accessibility by creating a video.

A video tour aims to enable people to feel better prepared to access the Centre and engage with support. Additionally, the centre offers webinars/virtual meeting spaces, this action help to reduce the level of anxiety and social isolation.



Sponsor

Peter Vonmoltz
VINCI Construction UK

- **Charity**
Centre for ADHD & Autism Support
- **Contact**
02084 291552
enquiries@adhdandautism.org
www.adhdandautism.org
- **Amount of funding**
£3,619
- **Project**
Accessibility Video / Brochure
- **Involvement of the sponsor**
Assistance with graphic design and advise for posters, leaflets, slides and motion graphics assistance and advice for workshop presentations, videos etc. Help to promote autism awareness in the workplace.



Promoting Independence

Helping to solve uncertainty

The Basement project is a small charity based in the town of Bromsgrove. They support young people up to age of 25 at risk of becoming homeless, who are homeless or in a crisis situation. The support offered by the charity is free non-judgmental and centered around the needs of each individual. They are also piloting a mediation service to re-build relationships between young teenagers and parents.

Expansion of the charity

With help of the VINCI UK Foundation, the charity was able to acquire more robust CRM and IT software. This new software will permit to promote the actions of the charity with more efficiency and encourage fundraising in the community.



Sponsor

Andrew Astley
VINCI Construction UK

Charity

North Worcestershire Basement Projects

Contact

01527 832993

kelly.turner@basementproject.org.uk

www.bromsgrovebasementproject.org.uk

Amount of funding

£3,000

Project

The expansion project

Involvement of the sponsor

Support and advice with marketing and use of social media. Provision of a store room for foodbank and participation in fundraising activities.



Acting for young people

Protective Behaviour

Safety Net is a charity created in 1994, based in the town of Brighton. The charity support vulnerable children by helping them to feel and be safe. The charity consults with under 13's to find out what kind of help they need, then working with the children giving the support they need to thrive.

Beneficiaries are children who faced vulnerable situations such as domestic violence, separate parents and mental illness. These issues affect children's lives on social, emotional and development levels. These situations can make them sad, isolated, fearful and anxious. Many children are referred to Safety Net because of low self-esteem, relationships difficulties, high anxiety, emotional regulation and bullying.

Keep it connected

With the help of the VINCI UK Foundation the charity was able to acquire IT software and hardware.

It was crucial to the charity to maintain the support of vulnerable children through this crisis, as anxiety levels reached an unprecedented level. The charity provide online support, information and resources to help children cope.



Sponsor

Charlotte Walsh
VINCI Construction UK

■ **Charity**
Safety Net

■ **Contact**
01527 832993
jen.tulloch@safety-net.org.uk
www.safety-net.org.uk

■ **Amount of funding**
£5,000

■ **Project**
Safety Net Digital

■ **Involvement of the sponsor**
Support in funding, communication and business planning.



Life Enhancing

Fight against exclusion

The Proud Trust is an organisation based in Manchester, they have a mission of achieving inclusion for lesbian, gay, bisexual, trans (LGBT+) children and young people, who would otherwise be isolated.

The work of the organisation has a national reach. Each year, the organisation helps 11,000 LGBT+ children and young people from Manchester and the North West to make a positive change for themselves and their communities, combating exclusion. They also run The Rainbow Flag Award innovative inclusive schools project in conjunction with their partners,

reaching 321 schools nationally and 218,000 children.

Social interaction

With the help of the VINCI UK Foundation, the organisation can build an Activity Room for LGBT+ people within the new centre.

The Activity Room accommodates the vast range of groups their community partners run. The room open 7 days per week and on the ground floor, for accessibility for all. This project allows to increase the use of the activity room.



Sponsor

Rob Brynes
VINCI Construction UK

Charity

The Proud trust

Contact

07813 981338
amelia.lee@theproudstust.org
www.theproudstust.org

Amount of funding

£5,000

Project

LGBT+ Centre Rebuild Project -
Activity Room

Involvement of the sponsor

Involvement on the building board, providing advice, signposting and constructive challenges.



Making life easier for older people

Listening to specific needs

Bedford Citizens Housing Association Limited also known as BCHA was formed in 1957 for the purpose of "housing elderly people of limited means". The organisation support older people with housing and care. They allow beneficiaries to live in their house and receive care and assistance with daily living tasks.

Promote well-being

With the help of the VINCI UK Foundation, Bedford Citizens Housing Association are able to develop the existing gardens at two sites on Kimbolton Road. The development will enhance residents lives.



On the first site they create a sensory garden which includes features, surfaces, objects and plants that stimulate resident's senses through touch, sight, scent, taste and hearing.

On the second site they install raised beds to support tenants in being able to take part in communal gardening.

The aim of the project are multiple, provide a stimulating, interesting outdoor environment which promotes positive effects in supporting tenants wellbeing.



Sponsor
Phill Russell
VINCI Facilities

Charity

Bedford Citizens Housing Association Limited

Contact

01234 321400
enquiries@bchal.org
www.bchal.org

Amount of funding

£4,698

Project

Garden Project BCH & Oak Way House

Involvement of the sponsor

Provide access to specialists who can support the garden projects through his contacts within the FM industry. Act as a catalyst and inspiration for further fundraising activities within the wider organisation.



A little help, carefully targeted, goes a long way

Fighting against isolation

Independence at Home is a charity based in Harrow who was established in 1965. The charity has transformed the lives of over 44,000 vulnerable people living with long-term disabilities and illnesses. They help people who are struggling to carry out daily activities due to disability or their medical conditions.

Beneficiaries are from low income households, they may live alone or in unsuitable housing and receive little support from statutory services. They struggle to cover basic costs like food, heating and are in no position to fund specialist mobility equipment.

Gaining autonomy

With the help of the VINCI UK Foundation, the organisation will be able to achieve their project, to purchase disability mobility equipment and home adaptations which are unavailable via statutory channels. This support will enable 8 disabled people to receive the specialist mobility equipment they need to remain independent at home, school, college and in the workplace. It also allows them to reduce their need for carers.



Sponsor

Helen Pietruch
VINCI Facilities

- **Charity**
Independence At Home
- **Contact**
02084 277929
iah@independenceathome.org.uk
www.independenceathome.org.uk
- **Amount of funding**
£3,200
- **Project**
Increasing the independence and mobility of disabled people and those living with a long-term illness
- **Involvement of the sponsor**
Help the charity to improve their social media presence.



Sponsor
Cara Kennelly
VINCI Facilities

Work for all

Fighting the unemployment of disabled adults

Watford Sheltered Workshop Ltd is an organisation based in Watford which has existed since more than 55 years.

They provide supported employment and work experience to disabled adults and also training in areas of functional education and life skills. The organisation teaches all that is involved within mainstream employment and better equip their members for this transition.

Beneficiaries and their families come from the local and wider area including Hertfordshire, Bedfordshire, Buckinghamshire and North Middlesex.

Need a refurbishment

With the help of the VINCI UK Foundation, the organisation has replaced their boiler and cylinder present in the workshop. This refurbishment has allowed the organisation to put an end to regular repair costs. This renovation also allows to have a better work environment.



- **Charity**
Watford Sheltered Workshop Ltd
- **Contact**
01923 220256
ronnie@watfordworkshop.co.uk
www.watfordworkshop.co.uk
- **Amount of funding**
£6,150
- **Project**
Workshop Refurbishment Project
- **Involvement of the sponsor**
Help to manage the installation project.



Quality support for vulnerable people

Act for individual development

Way Ahead Support Service also known as WASS is a charity who provides support to individuals with various physical, learning disabilities and/or mental issues.

WASS care has an enabling approach, encouraging individuals to take control of their lives and to be independent as possible in the way that best suits them.

This includes independent living, tenancy support, daily living skills, being part of local community and accessing appropriate services. They cater for a unique group of people some enduring mental health issues and learning/physical difficulties.

These individuals are not a high priority in today's environment and often fall between the gaps of health and social care service provisions. The charity help beneficiaries to maximise their potential and develop to mature and capable young adults.

Maintaining the link with the help of digitalisation

With the help of the VINCI UK Foundation, WASS can increase their overall digital maturity to better enable its ability to strengthen social links, reduce isolation and loneliness through digital means. With the technology adopted users can be digitally assessed and educated to improve low maturity index scores.

The charity upgraded their Drop-in service with computers for training individuals from digital poverty backgrounds. Tablets are available to extra vulnerable and isolated people so they can continue with one to one support within safety of their community.



Sponsor

Nirmal Singh
VINCI Facilities

■ **Charity**
Way Ahead Support Service

■ **Contact**
01926 622980
info@wayaheaduk.org
www.wayaheaduk.org

■ **Amount of funding**
£3,500

■ **Project**
Digital Participation Project

■ **Involvement of the sponsors**
Support the charity with his digital expertise, business analysis and systems development including cloud infrastructure.



Specialist playgroup for children with physical needs

A skilled team at the disposal of the children

Playskill is a charity based in Watford created in 2006, they provide free specialist parent and child pre-school skills-development groups for children (aged 1-5) with physical disabilities or developmental delay.

Playskill also provides valuable practical and emotional support to parents and families of disabled children, who often report high levels of stress and isolation. Parents/carer can access a wide support network, with specialist training, peer-support groups, advice and assistance from a Parent Support Worker as well as social activities and outings for the whole family.

The charity runs in Watford and Hemel Hempstead, serving families from across Hertfordshire and close-bordering counties, providing vital support. Each term, Playskill supports 48 children and their families.

Gain space

The charity have acquired an adjacent workspace. The grant will help to purchase basic equipment for the new office (such as desks, laptops and printers) necessary to support their work to reduce disadvantage and isolation for local disabled children and families.

The extra space and new equipment will have a positive impact and will enable their teams to operate more effectively and achieve better outcomes for some of Hertfordshire's most disadvantaged children and families.



Sponsor

Serina Coles
VINCI Group & Central Services

■ **Charity**
Playskill

■ **Contact**
07749 900596
fundraiser@playskill.org.uk
www.playskill.org

■ **Amount of funding**
£3,363

■ **Project**
Playskill Office Expansion

■ **Involvement of the sponsors**
Support the charity with expertise in finance and management.



Define Your Future

Bringing potential to life

Young Futures is a charity committed to helping care-leavers, those preparing to leave care, overcome adversity and trauma and build happy, meaningful lives.

They support the difficult transition to adulthood and independent living by providing high-quality accommodation. This is fully integrated with practical

and therapeutic support i.e. counselling, coaching, art, drama therapy, sports and cultural opportunities.

Young Futures has supported over 350 young people aged from 16 to 21 for periods of between six months and three years.

Beneficiaries are from all ethnicities in some cases with baby or young child and have backgrounds with deeply traumatic experiences including violence, abuse, deprivation and neglect.

High standard place

With the help of the VINCI UK Foundation, Young Futures can provide high quality, well maintained accommodation for young care leavers.

The main objective of this project is to provide young care leavers with a home not just a place to live. This is essential because young people desperately need to be in a safe, secure and comfortable environment.

The refurbishment fund offered everyone in their care with high quality, well maintained and essential items. The fund also permits to avoiding the delays of repairs, maintenance or new purchase equipment which can cause distress to beneficiaries.



Sponsor

Claire Ammar

VINCI Construction Grands Projets
VINCI Construction UK

■ **Charity**
Young Futures

■ **Contact**
07811 155838
osman.jama@youngfutures.org.uk
www.youngfutures.org.uk

■ **Amount of funding**
£14,000

■ **Project**
Refurbishment funds

■ **Involvement of the sponsor**
Sponsors carried out interventions with the beneficiaries to exchange on the trades related to construction, architecture and design.



Building self esteem

Support disadvantaged people

Clapton Common Boys Club also known as CCBC is a charity in the London Borough of Hackney.

They provide support to young people and adults and their mission is to ameliorate the effects of deprivation, by offering stimulating and constructive bespoke activities to their members.

The highly successful services of the charity have doubled in recent years to meet rising demand.

Let's promote reading

With the help of the VINCI UK Foundation, the charity was able to implement its project called Reading Buddies Library and programmes. The funds donated by VINCI UK Foundation allowed the purchase of 300 books. This project is designed to create a community library open to the wider community. The library is specifically designed to increase subject knowledge, development, reading and researching abilities of disadvantaged and disengaged people.

The Reading Buddies Library offers free library membership, year-round recreational activities, seasonal programmes, access to a digitalised computer system and education training. There are approximately 1200 beneficiaries of this project.



Sponsor

Tom Langsdale
VINCI Construction Grands Projets

■ **Charity**
Clapton Common Boys Club

■ **Contact**
02088 098171
office@ccboysclub.org

■ **Amount of funding**
£4,425

■ **Project**
Reading Buddies Library and programmes

■ **Involvement of the sponsor**
Provide help with project management and other ad-hoc support.



Improve awareness of Noonan Syndrome and its impact on the lives of those affected

Helping people in difficulty

Noonan Syndrome Association is a charity based in the town of Shifnal. The charity provides help and support to people affected by Noonan Syndrome. They operate in a number of ways : Support, Research and Awareness.

The Noonan Syndrome Association is involved in medical and social research via the direct involvement of members in research projects. They improved awareness of the condition and its impacts on the lives of those affected.

Bringing the community together

With the help of the VINCI UK Foundation, the Noonan Syndrome Association has established the 'Be Your Self' project. The project consists to bring together the community of families, especially children and young people, affected by Noonan Syndrome across the UK.

The objectives of this project are to address bullying and sense of isolation which many Noonan Syndrome experience by building self-confidence, developing interpersonal and team working skills. 184 people are beneficiaries of this project.



Sponsor

Pierre-Edouard Denis
VINCI Construction Grands Projets

Charity

Noonan Syndrome Association

Contact

01952 463177
info@noonansyndrome.org.uk
www.noonansyndrome.org.uk

Amount of funding

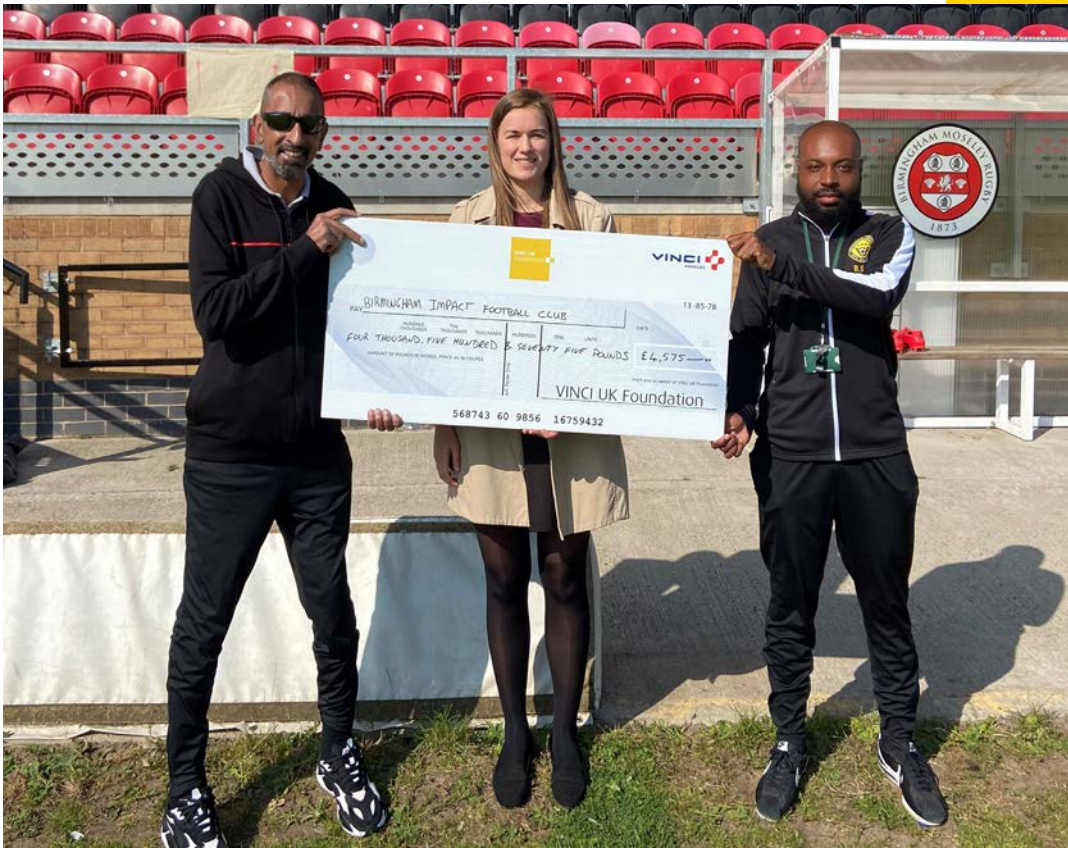
£15,000

Project

Be Your Self

Involvement of the sponsor

Provide help in management and fundraising.



Kicking it to the top

Creating a positive and inclusive atmosphere

Birmingham Impact Football Club CIC was established in 2017 and provides a safe, fun environment for children players of all abilities to learn, develop and enjoy playing football as a community sport, with community values.

The club is run by Birmingham based football professionals as well as youth-friendly people with various skills, experiences and connections. These include FA qualified coaches, sports fitness workers and football scouts with links to local professional clubs.

Beneficiaries are children aged between 5 & 14 living in and around Billesley and Washwood heath. The organisation offers 2-hour sessions twice a week.

Brand new equipment

With the help of the VINCI UK Foundation, Birmingham Impact Football Club CIC can gift all their team including staff a new club tracksuit. The grant also allowed them to take the children on trips to watch games at professional clubs and places where they can take part in fun activities.

The aim of this project is help children get over the negative impact during the lockdown in terms of socialisation.



Sponsor

Helena Bullivant
VINCI Energies UK & RoI

Charity

Birmingham Impact Football Club CIC

Contact

07932 357478
zehirkadra@birmingham
impactfc.co.uk
www.birminghamimpactfc.co.uk

Amount of funding

£4,575

Project

Embracing diversity and inclusion in football

Involvement of the sponsors

Help the charity in accounting and bookkeeping. Also Helena is a qualified referee and will get involved with the games when games are permitted again.



Supporting the little steps that make the big things happen

Skills development

Chuckle Productions is a charity based in Stone and created 2009. With the aim for every children or young person to shine as themselves by expanding their horizons, enabling access to new experiences and developing their skills and talents through the Arts.

They deliver a musical theatre company for children with special needs, short break activities, educational provision placements and assessment for children at risk of exclusion from school. Chuckle helps over 150 children, young people and their families per week.

Renovation of reception space

With the help of the VINCI UK Foundation, Chuckle will renovate their tearoom into a dedicated safe sensory space including a new partition wall and door. The grant will them also allow to purchase some sensory equipment.

The aim of the project is provide a safe, fun immersive space for children to enjoy, create and experience. This is very useful for children and young people who have profound and multiples difficulties and complex autism. The space will also provide a nice environment for visitors and other users.



Sponsors

Tim Hampshire & Susan Blundell
VINCI Energies UK & RoI

Charity
Chuckle Productions

Contact
07837 741510
fun@chuckleproductions.org
www.chuckleproductions.org

Amount of funding
£10,520

Project
Chuckle Sensory room
renovation and new flooring

Involvement of the sponsors
Advice on lighting/electrics
within the sensory room, as
well as other practical and
project management support.



Ensure safety and empowerment for women and children who are subject to domestic violence and abuse

Women and children protection

Coventry Haven Women's Aid is a small charity who offer specialist support to all women and children subjected to any type of abuse. Established 49 years ago, they provide a range of free services including safe refuge accommodation including bespoke wrap around support, helpline, emotional support, Independent Domestic Violence Advocates (IDVA).

Beneficiaries are any women and children in Coventry who are being subjected to abuse, whether they are still living in the household or not and survivors who are struggling with historic abuse.



Communication improvement

With the help of the VINCI UK Foundation, the charity provided a laptop in each refuge room. The project allows private support with their refuge practitioners in the residents own room, away from others. This also helps workers to avoid duplication of notes, ensure quicker routes to the specialist support and assist individually the residents with their needs.



Sponsors

Rob Povall, Sharon McCormack & Luke Skelton
VINCI Energies UK & RoI

Charity

Coventry Haven Women's Aid

Contact

02476 444077
info@coventryhaven.co.uk
www.coventryhaven.co.uk

Amount of funding

£2,735

Project

Laptop for Refuge

Involvement of the sponsors

Help the charity to supply laptops for rooms in the refuge. Participation of laptops set up and guidance advise from desktop support engineer to ensure the items are fit for purpose.



Helping Vulnerable Families To A Brighter Future

A day center for vulnerable family

The Family Haven is a charity located in Gloucester and created in 1988. The charity helps vulnerable families with children under the age of five. At the day centre they provide a safe, warm caring place where people can access the help and support they need. Parents and children can flourish.

The day centre comprises of an Ofsted registered nursery which specialises in helping vulnerable children, a kitchen for home-cooking, bathroom and laundry facilities. Their support workers provide help and support for parents in order to break down barriers, reduce isolation and empower people with knowledge and advice.



Communicating efficiently

With the help of the VINCI UK Foundation, the charity was able to renovate its existing website in order to offer a better service. The old website was not mobile phone friendly which is a major issue with the development of smartphone use.

The renovation of the website will allow the charity to communicate better with their service users, friends, donors and volunteers. A more effective website will also serve to promote the charity better.



Sponsor

Michelle Goscombe
VINCI Energies

Charity

The Family Haven

Contact

01452 422971
fundraising@thefamilyhaven.com
www.thefamilyhaven.com

Amount of funding

£3,000

Project

The Family Haven Website
Redesign Project

Involvement of the sponsor

Support the charity with donations and fundraising.





Cancer awareness and support

At the service of people suffering from Cancer

Firefly Cancer Awareness & Support is a charity who provides free transport for cancer patients to and from various cancer treatment centres in the city of Sheffield.

The transport is provided for patients who have no other viable means to attend treatment centres either through physical issues or health issues which means that they would be unable to use public transport.

In 2019 Firefly provided free transport for over 8,000 cancer patients, carers and family members to and from various treatment centres. Firefly also provide respite accommodation breaks for cancer patients, plus carers and family members.

Vehicle replacement

With the help of the VINCI UK Foundation, the charity can acquire a new vehicle. This new vehicle replace an existing one which has reached the end of its serviceable life. This enable Firefly to sustain the level of service it provides.



Sponsor

Allan Ellams
VINCI Energies UK & RoI

Charity

Firefly Cancer Awareness & Support

Contact

07515 632897
Chewybacchus@live.com
www.firefly-support.co.uk

Amount of funding

£10,000

Project

Creating a comfortable haven for the patient

Involvement of the sponsors

Support as volunteer, advice on health & safety issues.

How to get involved



1. Find an organisation to support

Look for an organisation fighting social exclusion near the place you live/work



2. Meeting the organisation

Design a project meeting all the Foundation's criteria and define your role as a sponsor

You want to get involved in a project but you do not know any organisation?

You may enrol as a volunteer by contacting a Local Coordinator of the Foundation, or sending an email to contact@vinci-uk-foundation.co.uk

The Foundation will contact you to offer a project to sponsor in your region.

You want to dedicate some time to a charitable project?

Complete the request for support forms with your charity, available on our website (www.vinci-uk-foundation.co.uk) and send them to the Foundation.

A meeting with the organisation takes place to define the sponsor's role and the objectives of the financial support.

The project is submitted to the Foundation Selection Committee.

If the support of the project is validated by the Board of Directors, a partnership agreement is signed between the Foundation, the organisation and the sponsor.



3. Submit the project

Send the Application Form to the Foundation from January to March 2021



4. Let the Selection Committee decide

Results will be communicated in September 2021

VINCI UK Foundation Trustees:

- Scott Wardrop - Eurovia UK
- François Pogu - VINCI Construction Grands Projets
- Philip Hines - Bachy Soletanche
- Russell Matthews - VINCI Construction UK
- Jean-Yves Cojean - Fondation VINCI Pour la Cité
- Philip Horton - VINCI Concessions
- Tom Jones - Nuvia
- Pascal Mercier - Freyssinet
- Rochdi Ziyat - VINCI Energies UK & Rol

VINCI UK Foundation Co-ordinators:

- Maggie Hall - Eurovia UK
- Will Gates - VINCI Construction Grands Projets
- Andrew Smart - Bachy Soletanche
- Joanne Mercer - VINCI Construction UK
- Christopher Medlock - Nuvia
- Clare White - Freyssinet
- Deborah Harris - Belfast Airport
- Ruth Ottley - VINCI Energies UK & Rol

VINCI UK Foundation Selection Committee Members :

- Jasmin Moroney - Director QM / Safety - VINCI Energies UK & Rol
- David Campbell - Group HSE Director - Eurovia UK
- Jack Brennan - Community Liaison Manager - Bachy Soletanche
- Nicky Edson - Director of Consulting and Technical Services - Nuvia
- James Alexander - CFO - Freyssinet
- Therese Stevenson - Divisional Head of HR - VINCI Construction UK
- Emmanuel Costes - Construction Manager - VINCI Construction Grands Projets
- Ophelia Duval - Foundation Communications - VINCI Pour la cité
- Jaclyn Coulter - HR Manager - Belfast Airport

This document is published by the VINCI Energies communications department.

Photo Credits: DR VINCI Energies photo library, all rights reserved.

Director of publication: Rochdi Ziyat. Chief Editors : Ruth Ottley, Bobel FEDIOR. Design and Production: Bobel FEDIOR

Become a Sponsor.
Fight social exclusion together!



2050 The Crescent
Birmingham Business Park
Birmingham B37 7YE
United Kingdom
Phone: 0121 717 1820
www.vinci-uk-foundation.co.uk